



CENTER FOR
EDUCATION
AND LIFELONG
LEARNING

ARISTOTLE
UNIVERSITY OF
THESSALONIKI

Center for Education and Lifelong Learning AUTh

LLL Programs Brochure

Contents:

1. The Center for Education and Lifelong Learning of AUTh
2. Why choose the Center for Education and Lifelong Learning AUTh?
3. What kind of educational programs are carried out?
4. How are the educational programs carried out?
5. What is the application process?
6. Are there tuition fees?
7. What are the benefits from program participation?

1. AUTH's Education and Lifelong Learning Center



The Center for Education and Lifelong Learning is an independent academic unit of the Aristotle University of Thessaloniki. It offers educational programs of specialization, vocational and general training programs, summer/winter schools and in general lifelong learning programs.

Given that AUTH is the **only interdisciplinary** university in Greece, one of the largest in the Balkans and a **pioneer in research and innovation**, the **experience and expertise** of the University's academic staff are utilized in Lifelong Learning educational programs that are carried out from **Center for Education and Lifelong Learning AUTH**.

2. Why choose AUP's Education and Lifelong Learning Center?

The Center bridges the gap between training and labor market needs based on studies and specialized data. Participation in the programs of the Center for Education and Lifelong Learning of the AUP offers a unique chance for developing the required skills to become more effective in your professional performance, as well as to become more competitive in the job market.

Main goals of the Center include:

- ✓ The education of the participants and their upskilling with specialized knowledge based on current developments in science, technology and economy.
- ✓ The enhancement of the participants' qualifications based on adult training teaching objectives.
- ✓ The achievement of specific learning outcomes, according to European and international standards.
- ✓ The acquisition of new skills that will lead to a different type of employment (Reskilling).
- ✓ The upgrading, specialization and broadening of knowledge in an existing professional subject (Upskilling).



3. What kind of educational programs are carried out?

✓ The Aristotle University of Thessaloniki is constantly innovating in academic research activities both nationally and internationally. The programs carried out at the Center for Education and Lifelong Learning belong to cutting-edge fields and cover a wide range of academic disciplines. Greek-language and English-language programs are provided in various educational fields from all the Schools and Departments of AUTH.

✓ The programs offer scientific specialization in the subject areas of AUTH, while many programs approach specific educational fields interdisciplinary. The programs are categorized into six subject areas:

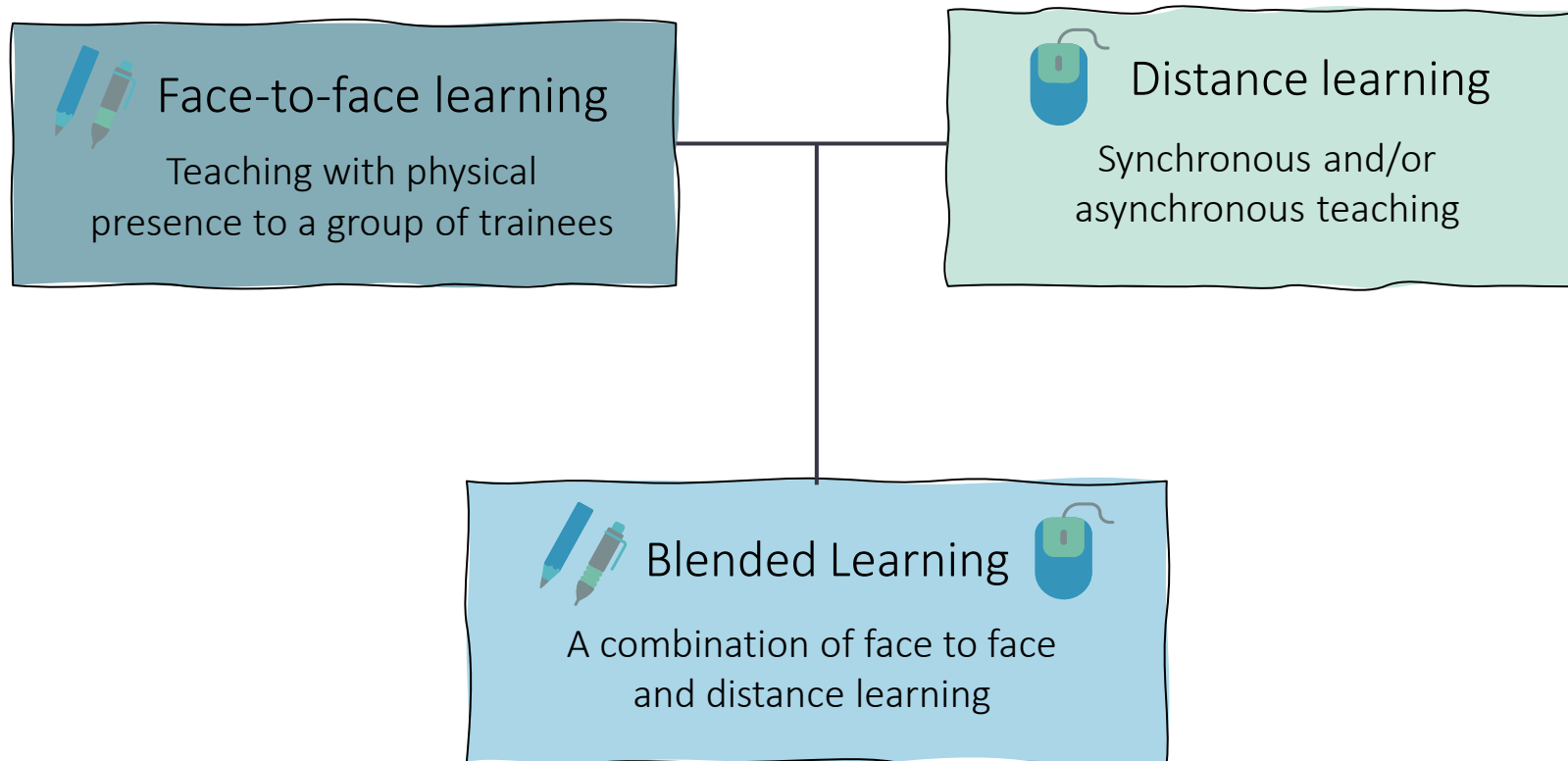
- Humanities and Arts
- Social, Political and Economical Sciences
- Education and Training Sciences
- Health and Life Sciences
- Natural Sciences, Engineering and Technology Studies
- Environmental Studies

When are the programs carried out?

Programs are carried out throughout the year. Each program has a different start date, duration, and cost.

4. How are the educational programs carried out;

The programs are implemented with strict criteria that ensure the high quality of the education provided, the educational platform & classrooms, as well as the educational material provided to the participants. The Center makes use of the university's equipment and infrastructure and all its programs offer flexible teaching methods. On-site courses take place at the university or third party venues, while distance education is supported by the expertise of the Information Technology Center of AUTH. In general, the programs are implemented by one of the following teaching methods:



5. What is the application process;

- ✓ All programs are announced on the website of the Center.
- ✓ Those interested can subscribe to the Newsletter to learn first about all the new programs offered to the public.
- ✓ A study guide is issued for each program, which describes the conditions for participation and selection of participants for each program.
- ✓ The application process is simple:

Step 1: Those interested submit an application on the website of the Center for the program they wish to attend.

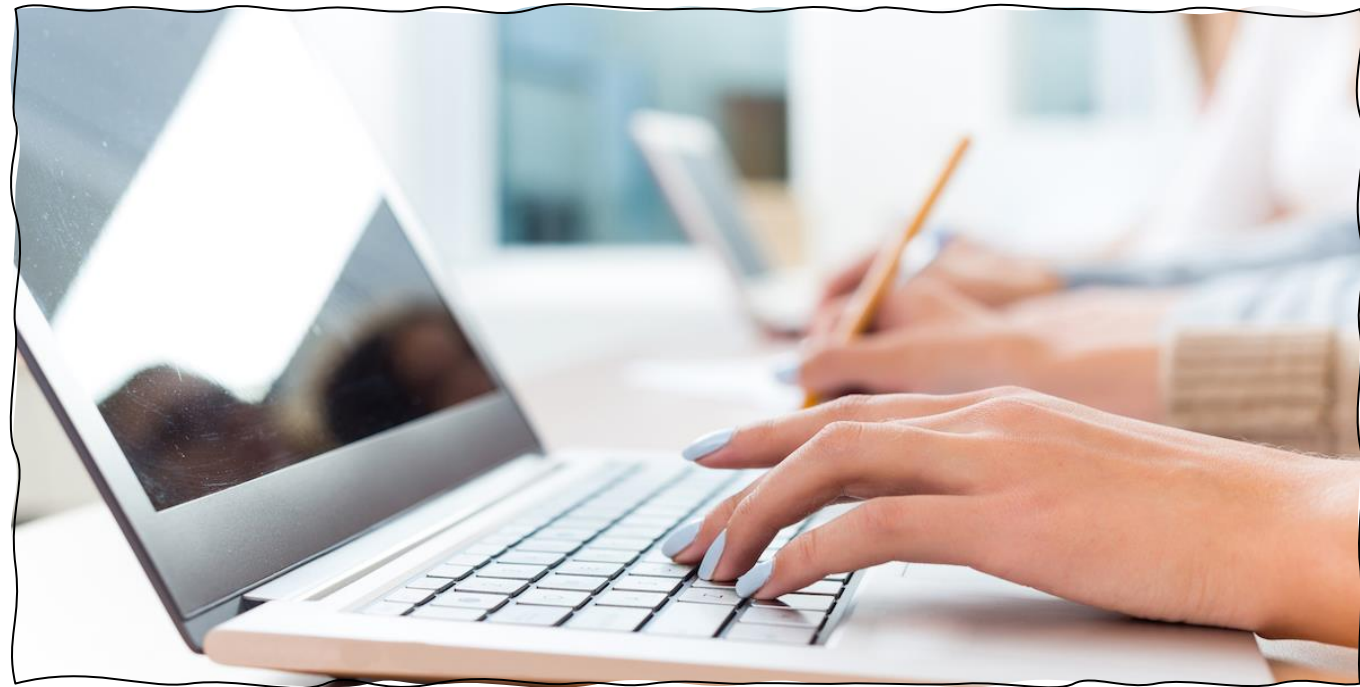


Step 2: Then their application is evaluated by the Scientific Director of each program.

Step 3: After the deadline for the submission of applications, the Academic Manager informs those interested within a reasonable period of time about the approval or rejection of their application, as well as about any modification about the start/end date of the program.

6. Are there tuition fees;

- ✓ Most of the programs carried out by the Center for Education and Lifelong Learning AUTH are self-financed and tuition fees are provided for their attendance.
- ✓ There is information about the cost and the method of payment for the tuition fees in the website of the Center. Each program has its own webpage where details like that are clarified.
- ✓ The Center also implements funded programs, for which there is no participation cost.



7. What are the benefits from program participation;



- ✓ Certificate of Completion/Attendance & ECTS credits.
- ✓ Specialized academic teaching staff with many years of teaching and research experience.
- ✓ Up-to-date educational material in printed and/or electronic format that supports each teaching unit of the respective program.
- ✓ Flexible implementation methodology with modern e-learning platforms of the Aristotle University of Thessaloniki.
- ✓ For specific categories of programs: points for participation in ASEP programs and in the process of selecting Education Executives and Principals-Vice Principals of schools.
- ✓ Administrative support from the Center, as well as the secretariat of each program for any matter concerning the studies of the trainees.
- ✓ Discount policy in tuition fees.

You can find the
**Regulation
of Studies**
[HERE.](#)



NEWSLETTER

You can subscribe to the Newsletter to be
the first to learn about the new programs of
KEDIVIM AUTH.

Subscribe

Testimonials:

«Academics and professionals informed us concerning the latest developments in journalism and communication. I will certainly apply next year.»

- **New Trends in Media and Journalism THISAM**

«It is a very good introduction for anyone who wants to further study the field of Computer Vision and Image Processing.»

- **CVML Short Course – Machine Learning and Deep Neural Networks**

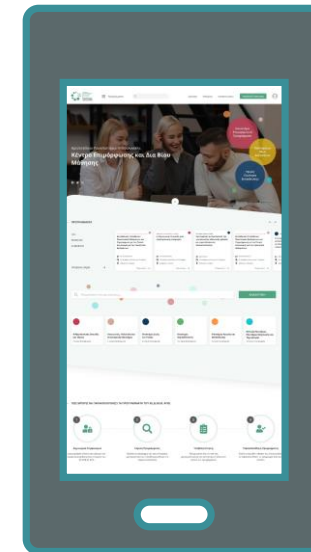
«It was a very productive summer school. Congratulations!»

- **1st Greek Summer School on Synchrotron Radiation: Properties and Applications**

«I would further recommend it to other colleagues!»

- **Experimental Design and Analysis of Data from Animal Experiments**

Discover more on our user-friendly and up to date website!



www.kedivim.auth.gr

Contact us:



kedivim@auth.gr



2310 996782, -88, -83, -81



University Campus, AUTH

Follow us on Social Media:



Κέντρο Επιμόρφωσης και Διά Βίου Μάθησης ΑΠΘ



@kedivim_auth



Center for Education and Lifelong Learning AUTH



@auth_kedivim